

RTC-700C

Intel® Atom™ Z2670

1.8 GHz Processor

7" WXGA TFT LCD

1 Mini HDMI, 1 Mini USB

Dual Camera

Copyright Notice

This document is copyrighted, 2015. All rights are reserved. The original manufacturer reserves the right to make improvements to the products described in this manual at any time without notice.

No part of this manual may be reproduced, copied, translated, or transmitted in any form or by any means without the prior written permission of the original manufacturer. Information provided in this manual is intended to be accurate and reliable. However, the original manufacturer assumes no responsibility for its use, or for any infringements upon the rights of third parties that may result from its use.

The material in this document is for product information only and is subject to change without notice. While reasonable efforts have been made in the preparation of this document to assure its accuracy, AAEON assumes no liabilities resulting from errors or omissions in this document, or from the use of the information contained herein.

AAEON reserves the right to make changes in the product design without notice to its users.

Acknowledgments

All other products' name or trademarks are properties of their respective owners.

- Intel[®] and Atom[™] are trademarks of Intel[®] Corporation.
- Atom[™] is a registered trademark of Intel.
- Adobe[®] Flash[®] Player Support

All other product names or trademarks are properties of their respective owners.

Packing List

Before you begin operating your tablet computer, please make sure that the following materials are enclosed:

- 1 RTC-700C Rugged Tablet with Windows® 8.1 Industry Pro
- 1 AC Adapter with Power Cord
- 1 DVD-ROM for USB driver & manual
(in PDF format)

If any of these items could be missing or damaged, please contact your distributor or sales representative immediately.

Optional Accessories

The following optional accessories are available for purchase. Please refer to Chapter 6 of this manual for further details.

- Barcode Scanner
- Magnetic Stripe Reader (MSR)
- Smart Card Reader (SCR)
- Docking Station

***Caution:** Purchase accessories that are approved for use with your Rugged Tablet Computer only. The above accessories are proprietary items. Our system vendor can obtain these approved accessories. If you use items that are not approved for use with this Rugged Tablet Computer, you may cause it to malfunction, emit or receive electro-magnetic radiation in excess of local regulations. For non-proprietary accessories such as PC cards or printers, ensure that the accessory functions properly with your Rugged Tablet Computer before making the purchase. Your system vendor may be able to recommend reliable brands and models.*

Safety & Maintenance

You can use your Rugged Tablet Computer under a wide range of environmental conditions. However, to ensure long use and continued high performance, consider the following factors when setting up your Rugged Tablet Computer (RTC):

- Follow all warnings and instructions noted in this documentation and in the Windows Help program.
- The input voltage range between the wall outlet and this adapter is AC 100V–240V, and the output voltage of this adapter is DC 12V, 2A.
- The first time you use your RTC, we recommend that you carefully read the Making Connections section of this manual and initialize the battery to ensure optimum battery performance.
- Unplug the RTC from the power outlet before cleaning. Use a damp cloth for cleaning. Do not use aerosols, solvents, or strong detergents.
- Slots and openings on the enclosure are for cooling purposes. Do not block or cover these openings or the system could overheat. Do not use or store the RTC near a source of heat or dust.
- On the base or rear panel of this RTC, there is a label with information on the power requirements of this system. These requirements must be followed. If you are unsure of your local power supply, consult your dealer or local Power Company.
- Do not step on or place anything on the power cord.

- If you use the RTC with an extension cord, ensure that the total ampere ratings of all the devices sharing the extension do not exceed the rating of the extension cord or the rating of the wall outlet.
- Never push foreign objects into the RTC through any of the slots or openings. Dangerous voltages are present, which could cause electric shock or fire, or damage sensitive components.

FCC

Warning!

This device complies with Part 15 FCC Rules. Operation is subject to the following two conditions: (1) this device may not cause harmful interference, and (2) this device must accept any interference received including interference that may cause undesired operation.

Caution:

There is a danger of explosion if the battery is incorrectly replaced. Replace only with the same or equivalent type recommended by the manufacturer. Dispose of used batteries according to the manufacturer's instructions and your local government's recycling or disposal directives.

Changes or modifications not expressly approved by the party responsible for compliance could void the user's authority to operate the equipment.

Attention:

Il y a un risque d'explosion si la batterie est remplacée de façon incorrecte. Ne la remplacer qu'avec le même modèle ou équivalent recommandé par le constructeur. Recycler les batteries usées en accord avec les instructions du fabricant et les directives gouvernementales de recyclage.

Les modifications non approuvées de façon explicite par l'organisme responsable de la conformité pourraient annuler le droit de l'utilisateur à opérer l'équipement.

China RoHS Requirements
产品中有毒有害物质或元素名称及含量
AAEON Panel PC/ Workstation

部件名称	有毒有害物质或元素					
	铅 (Pb)	汞 (Hg)	镉 (Cd)	六价铬 (Cr(VI))	多溴联苯 (PBB)	多溴二苯醚 (PBDE)
印刷电路板 及其电子组件	×	○	○	○	○	○
外部信号 连接器及线材	×	○	○	○	○	○
外壳	×	○	○	○	○	○
中央处理器 与内存	×	○	○	○	○	○
硬盘	×	○	○	○	○	○
液晶模块	×	○	○	○	○	○
光驱	×	○	○	○	○	○
触控模块	×	○	○	○	○	○
电源	×	○	○	○	○	○
<p>O: 表示该有毒有害物质在该部件所有均质材料中的含量均在 SJ/T 11363-2006 标准规定的限量要求以下。</p> <p>X: 表示该有毒有害物质至少在该部件的某一均质材料中的含量超出 SJ/T 11363-2006 标准规定的限量要求。</p> <p>备注: 一、此产品所标示之环保使用期限, 系指在一般正常使用状况下。 二、上述部件物质中央处理器、内存、硬盘、光驱、触控模块为选购品。</p>						

Contents

Chapter 1 Introduction

1.1 Introduction.....	1-2
1.2 Features	1-3
1.3 More Information	1-4
1.4 Quick Start.....	1-5
1.5 Loading Windows	1-6

Chapter 2 Getting Started

2.1 Introduction.....	2-2
2.2 Product Overview	2-3
2.3 Power Indicator	2-5
2.4 Touch Panel Control.....	2-6
2.5 Touchscreen Calibration	2-8

Chapter 3 Setting Up

3.1 Settings Screen	3-2
3.2 Setting the Power Button	3-10

Chapter 4 Driver Installation & System Recovery

4.1 Installation	4-2
4.2 System Recovery	4-4

Chapter 5 Power Management

5.1 Power Management	5-2
5.2 Heat Considerations.....	5-3

Chapter 6 Optional Accessories

6.1 List of Optional Accessories	6-2
6.2 Docking Station	6-3
6.2.1 Product Overview	6-4
6.2.2 Specifications	6-5
6.3 Magnetic Stripe Reader (MSR)	6-7
6.3.1 Demo Software	6-10
6.4 Smart Card Reader (SCR)	6-12
6.5 Barcode Scanner.....	6-13

Appendix A Statements

A.1 Statements.....	A-2
A.2 Canadian Notice	A-5
A.3 CE Mark Notice.....	A-7
A.4 Safety Caution	A-8
A.5 Battery Disposal.....	A-10
A.6 Battery Caution	A-12
A.7 Adapter Caution	A-13
A.8 FCC Interference Statement.....	A-14

Chapter

1

Introduction

1.1 Introduction

This Rugged Tablet Computer (RTC) is a fully functional PC with built-in wireless connectivity, Bluetooth[®], and an optional 3G module. With your RTC, you will be able to organize and access important business and personal information, send and receive e-mails, and access the Internet.

This User Manual contains setup information and describes the key elements and features of the RTC. New users can find a simple step-by-step guide in each chapter.

1.2 Features

Operating System

- Windows® Embedded 8.1 Industry Pro 32-bit

Processor

- Intel® Atom™ Z2760 1.8GHz Dual Core Processor

System Memory

- Mobile LPDDR2 2GB 800MHz

Storage

- 64GB eMMC

Connectivity

- Built-in 802.11a/b/g/n band wireless LAN
- Bluetooth® v4.0
- NFC/RFID (13.56MHz)
- 3G modem (optional)

1.3 More Information

About Your RTC

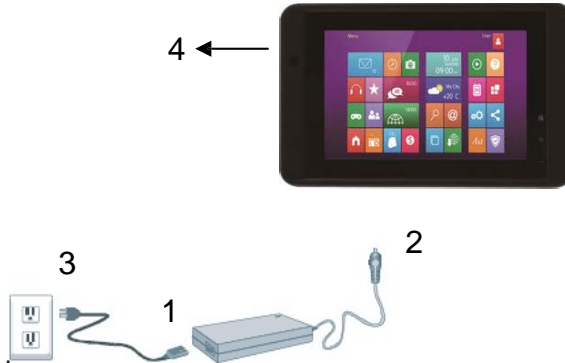
Users can find more descriptions about the key elements of the RTC-700C in this user manual. Please visit aaeon.com for the most updated version.

About Windows[®] Embedded Operating System

Windows developers may refer to Microsoft.com for more on the Windows[®] Embedded 8.1 Industry Pro Operating System.

1.4 Quick Start

Turning on the Rugged Tablet Computer for the First Time



1. Connect the AC adapter power cord to the AC adapter.
2. Connect the AC adapter to the DC power port on the bottom side of your RTC.
3. Connect the AC adapter power cord to an AC outlet.
4. Press the power button to turn on the power.

Note: Calibrate the battery and allow it to be fully charged before use (i.e. before disconnecting AC power). It is recommended that the battery is charged at least **once** per month to prevent battery deterioration. For more information, please refer to *Power Management* chapter of this manual.

1.5 Loading Windows

Your RTC will begin loading Windows once you turn on the power. Wait for a few seconds for Windows setup to load.

The “Welcome to Windows” screen will appear. You may disable this feature by clearing the check box labeled **show this screen each time Windows starts**.

Some software comes preloaded with Windows. New users can familiarize themselves by selecting them from the start screen.

Chapter

2

Getting Started

2.1 Introduction

This chapter introduces the different components and controls of your RTC, including the hardware components, software, and audio and video systems.

Before you begin using your RTC, read this chapter to familiarize yourself with the main components installed in the system.

2.2 Product Overview

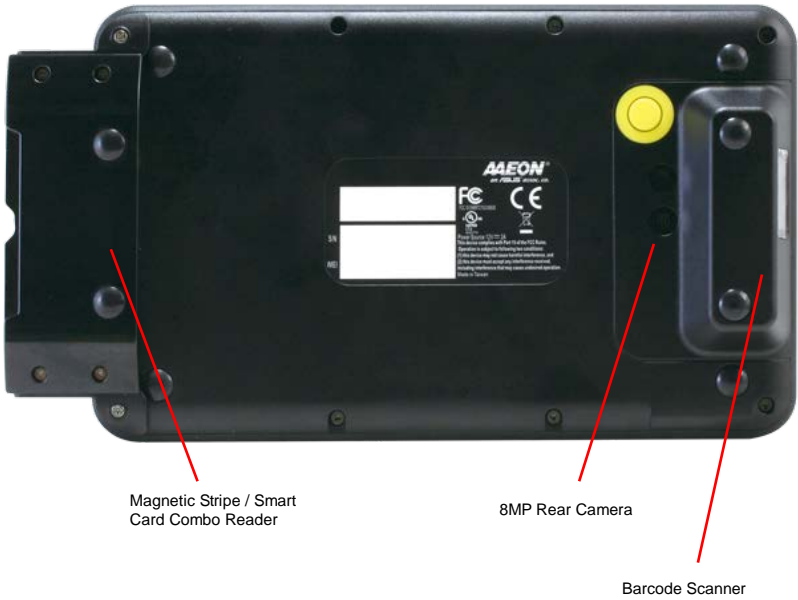
Front view



Side view



Rear View (with Magnetic Stripe/ Smart Carder Combo Reader and Barcode Scanner attached)



2.3 Power Indicator

The power indicator shows which power source the system is using, the battery status and the low battery power alerts.

Color	Description
Solid Green	RTC is running
Flashing Green	RTC is in sleep mode
Solid Red	Battery is charging
Flashing Red	RTC is in sleep mode
	Battery is charging
No Lights	Power off
	Battery is full charged

2.4 Touch Panel Control

Revealing the Charm Bar

- Swiping inwards from the right edge of the screen to reveal the Charm Bar, which includes five system commands: Search, Share, Start, Devices, Settings.



Switching Apps

- You can swipe inwards from the left edge of the screen to switch between apps.

Opening the Context Menu (Right Click Menu)

- You can open the context menu by tapping and holding anywhere on the screen.

Zooming

- You can zoom in or out by performing the pinch gesture (Pinch to Zoom).

Return to Start Screen

- You can return to the Start screen by swiping downwards from the top edge of the screen.

2.5 Touchscreen Calibration

The touchscreen should always be properly calibrated to ensure optimal user experience. Note that calibration should be done at least **once** every time the RTC is connected to a new display device.

To calibrate the touchscreen:

1. Go to Control Panel (from the Settings menu or tap and hold the Start button on desktop)
2. Open Tablet PC Settings
3. Tap on the Setup button in the Configure section under the Display tab
4. Tap anywhere on the screen
5. Restart the RTC

Chapter

3

Setting Up

3.1 Settings Screen

The Settings screen allows you to configure some settings of your RTC-700C, which includes:

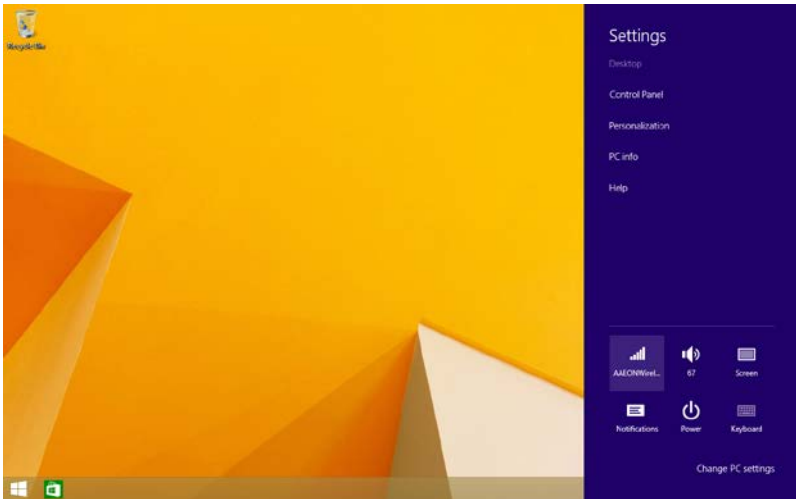
- Wireless & Network
- 3G (optional)
- Sound
- Screen
- Location & Security
- Applications
- Storage
- Accessibility
- Date & time
- Power

To enter the Settings screen:

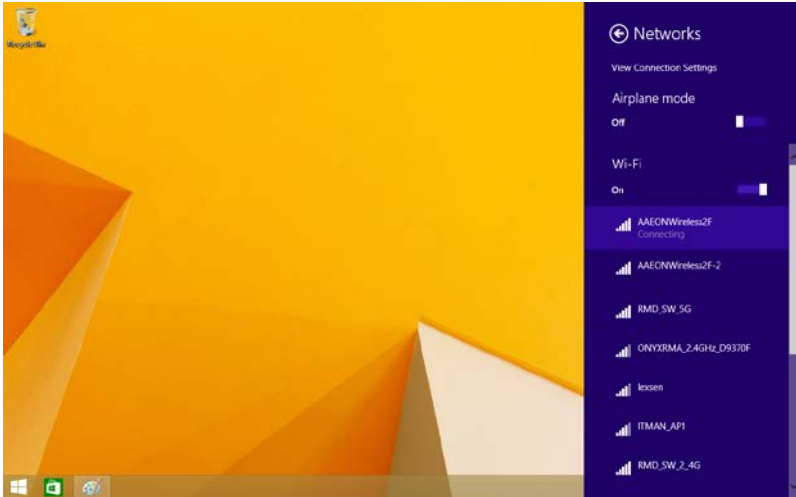
- Reveal the Charm Bar
- Tap “Settings”

1. Wireless & Network

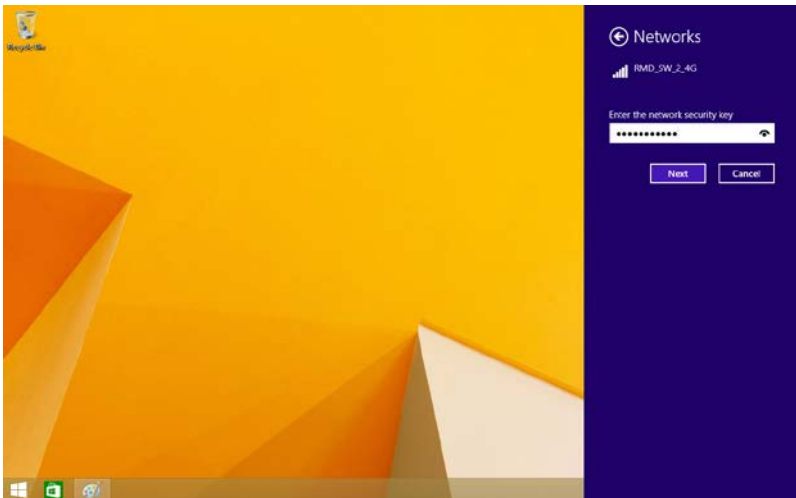
- Select Wireless & networks for Wi-Fi settings, Bluetooth® settings, VPN settings and Mobile network settings.



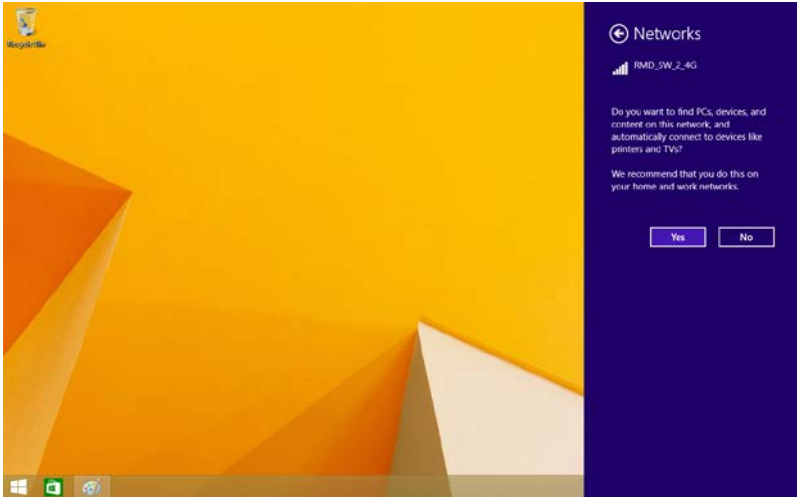
- Select your network



- Enter the password



- The system will confirm that you are connected to the internet.

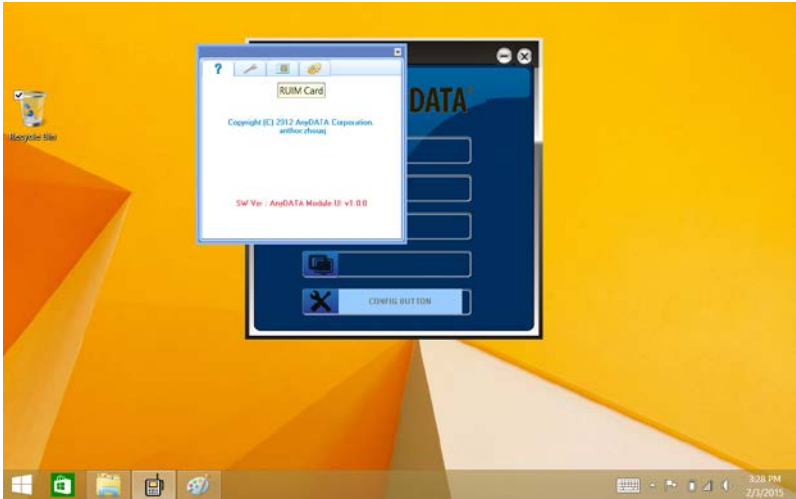


3G

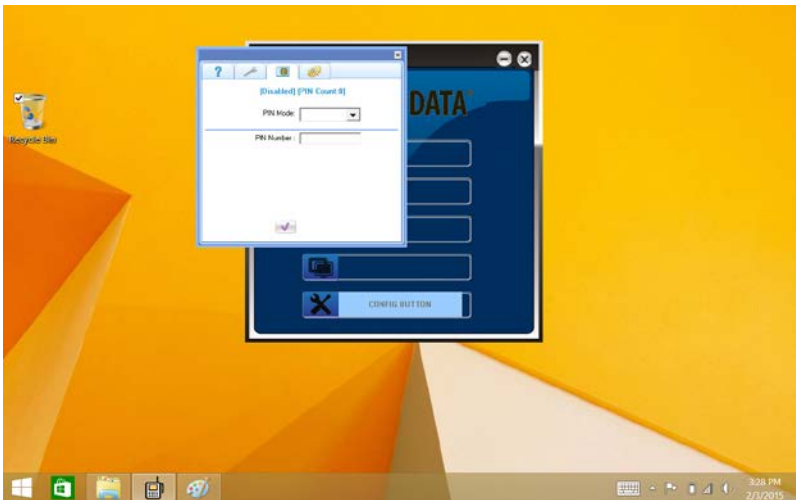
- Insert SIM card and open AnyDATA



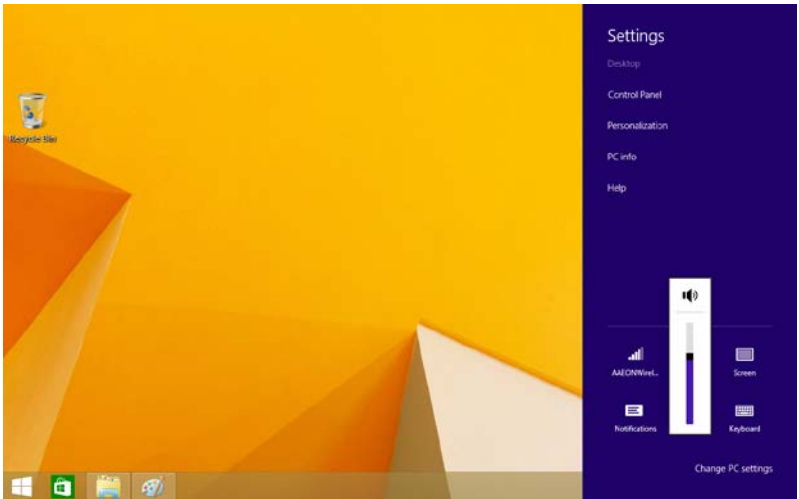
- Select RUIM Card



- Enter your PIN and tap the tick to confirm

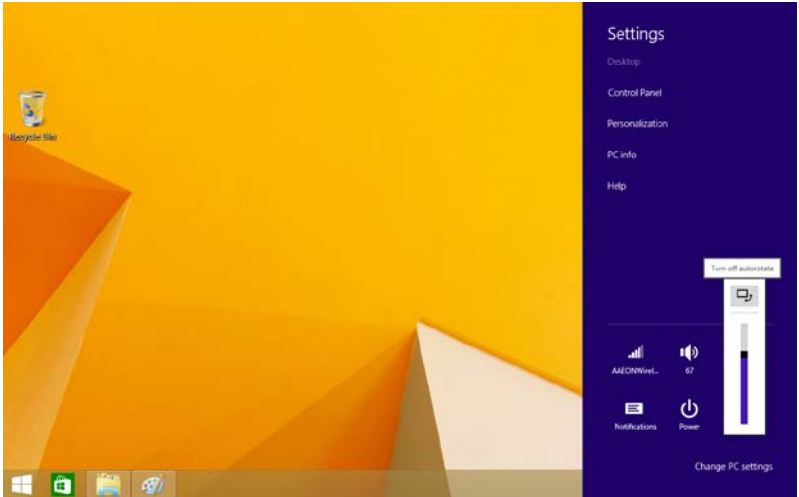


2. Sound



- Select Sound to set the volume of your system. Users can also use the +/- keys to increase/lower the volume respectively.

3. Screen



- Select Screen to open the brightness bar. Brightness can also be adjusted with a mouse.
- Tap the icon above the scroll bar to toggle screen rotation lock.

4. Location Services

- Select Location services to secure this tablet computer. This can also be used to determine positioning for other GPS related functions.

5. Apps

- Select Applications to manage applications, view services, storage use and battery use, as well as to locate options in

terms of application development.

6. Backup & reset

- Select Backup&reset to decide which applications to receive and sync data.

7. Security

- Select Security to back up important files.

8. Power

- Select Power to restart, shut down, or put your RTC to sleep mode.

Warning!



Always ensure that the RTC is properly shut down.
Failure to do so may result in data loss.

3.2 Setting the Power Button

The Power button can be set to different functions in the Control Panel.

1. Go to Control Panel (from the Settings menu or tap and hold the Start button on desktop)
2. Open Power Options
3. Select “Choose what the power buttons do”
4. Choose from the available options.
5. Save changes and exit

Chapter

4

**Driver Installation
& System Recovery**

4.1 Installation

The RTC-700C comes with a driver disk that contains all the drivers and utilities you need to setup your product.

Insert the disk and the installation guide will start automatically. If it doesn't, please follow the sequence below to install the drivers.

Follow the sequence below to install the drivers:

Step 1 – Install System Drivers

Step 2 – Install 3G Driver

Please read following instructions for further details.

Note: An external optical disk drive is needed for installation

Insert the RTC-700C driver disk into the disk drive to install the drivers.

Step 1 – Install System Drivers

1. Open the **Step 1. All Driver** folder and select your OS
2. Open the **setup.exe** file in the folder
3. Follow the instructions
4. Drivers will be installed automatically

Step 2 – Install 3G Drivers

1. Open the **Step 2. 3G** folder and open the **Setup.exe** file in the **AnyDATA UI_130716** folder
2. Follow the instructions
3. Drivers will be installed automatically

4.2 System Recovery

Like a desktop PC, system recovery can also be performed on the tablet. It will erase all user data and restore the tablet to the factory settings. We recommend backing up all data before doing so.

Please visit [Microsoft.com](https://www.microsoft.com) for detail instructions on recovering your device.

Chapter

5

Power Management

5.1 Power Management

Checking Battery Levels

- You can check the remaining battery power in the Windows® battery status indicator located at the lower right-hand corner of the task tray.

Battery Charging

- When turned off, a fully discharged battery will take about 3 hours to recharge. When turned on but not in sleep mode, it will take about 4~5 hours to recharge the battery. Refer to the table below for details:

Condition	Charging Duration
System On (Under Sleep Mode)	4~5 hours
System Off	~3 hours

Note: A fully charged Li-ion Battery can run the RTC for approximately 7.0 hours.

5.2 Heat Considerations

The processor in the RTC is specially designed to consume little power and generates very little heat. However, working in a hot environment or for prolonged periods may increase the temperature.

If the temperature continues to rise, processor activity will be reduced, resulting in a slight performance loss.

Chapter

6

Optional Accessories

6.1 List of Optional Accessories

The RTC-700C can be used with the following optional accessories to expand its capabilities. For more information of each item listed below, please refer to their respective sections in this chapter.

- Docking Station
- Magnetic Stripe Reader (MSR)
- Smart Card Reader (SCR)
- Barcode Scanner

6.2 Docking Station

The docking station provides users with a stable and convenient platform when using their RTC. With more expansion ports, the RTC can be doubled as a desktop computer when keyboard and mouse attached.

6.2.1 Product Overview



6.2.2 Specifications

System

- I/O
 - USB 2.0 x 4
 - RJ-45 jack for 10/100 Base-TX
 - Ethernet x 1
 - Micro HDMI x 1
 - RS-232 x 1
- DC Input
 - DC in 12V
 - Power Input Status:
 - Yellow – DC input
- LED Indicator
 - Blue – RTC connection
 - Ethernet Status:
 - Green – Connected

Mechanical

- Color
 - Black
- Construction
 - PC
- Dimension (W x H x D)
 - 243mm x 227mm x 180mm
- Gross Weight
 - 830g

Environmental

- Temperature
 - Operating Environment
 - Temperature: 0°C - 40°C

Storage Environment

Temperature: -10°C - 50°C

- ESD Air +/- 8KV, Contact +/- 4KV
- EMI/Safety CE/FCC Class B/UL

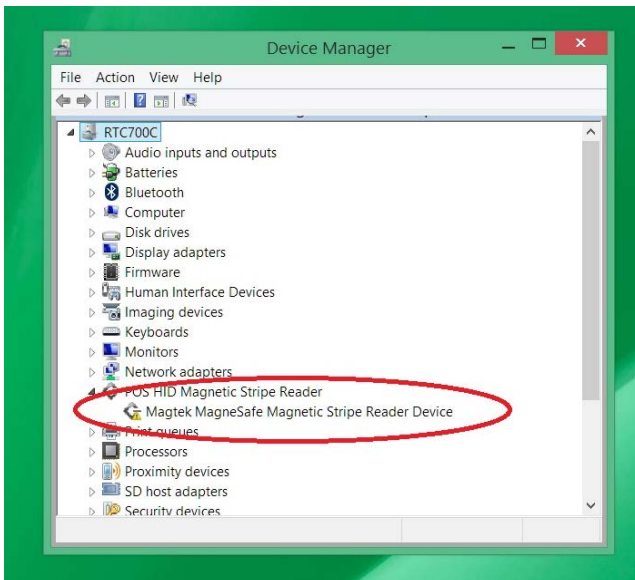
Power Supply

- AC/DC Adapter AC Power Input: 100V – 240V,
50Hz – 60Hz, 24W output: 12V,
2A

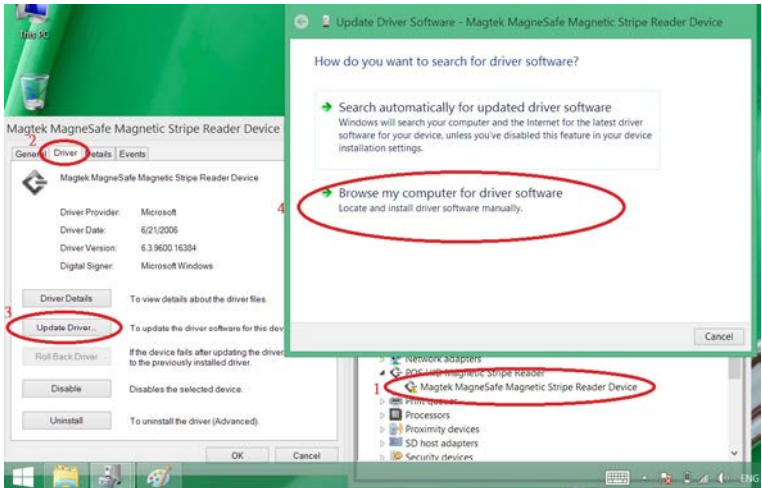
6.3 Magnetic Stripe Reader (MSR)

While setting up the Magnetic Stripe Reader, please follow the steps below to ensure that the device is properly installed.

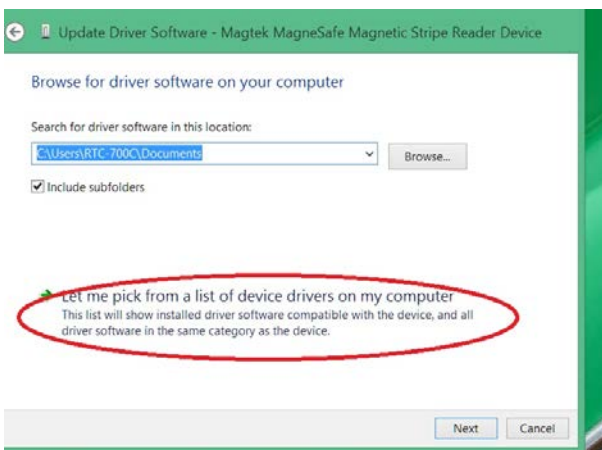
1. Mount the MSR to the tablet and go to Device Manager. You should see the following device error



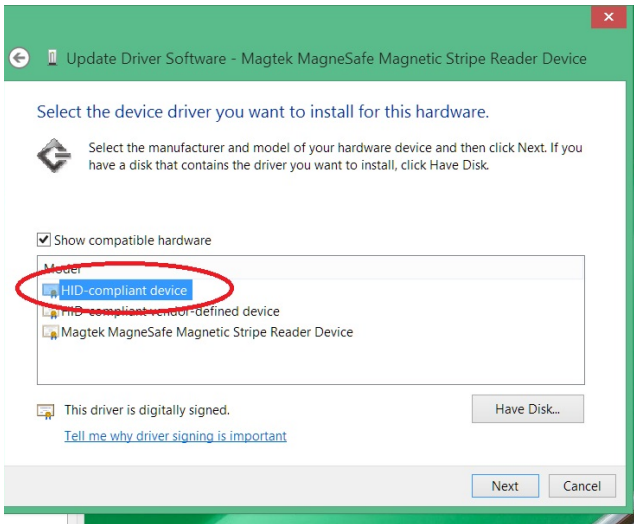
2. Double click on the device error and following the steps shown in the screenshot below to update drivers.



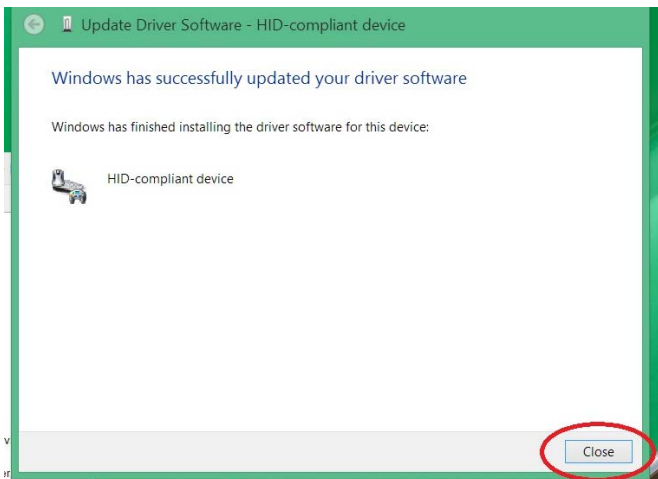
3. Select "Let me pick from a list of device drivers on my computer"



4. Select “HID-compliant device”



5. Drivers will be installed automatically. Close the dialog box to complete installation.

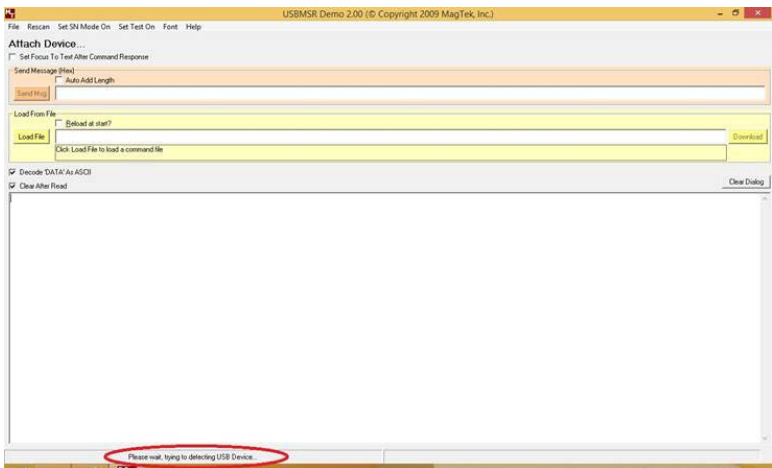


6.3.1 Demo Software

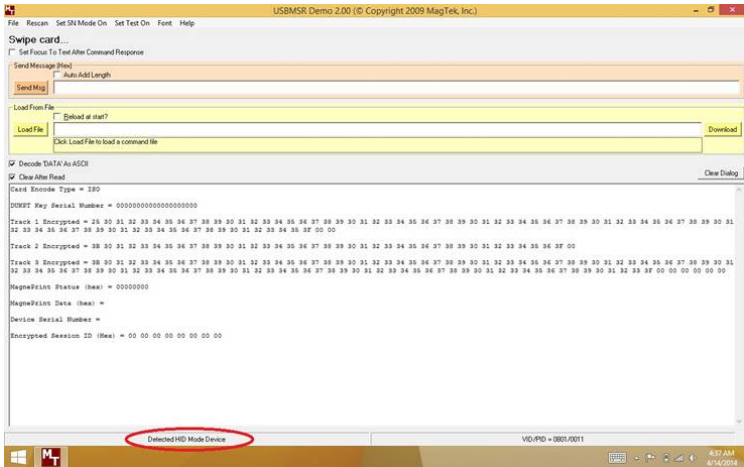
If you want to test the MSR, It can be done using a demo software, which can be downloaded at <http://www.magtek.com/support/software/downloads/sw/99510026.exe>

Please see below for instructions on using the software.

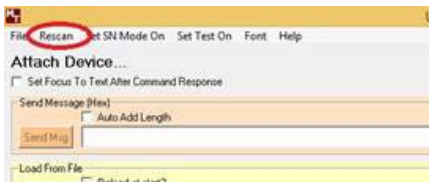
1. Open the software and it should auto-detect the MSR. The search status is highlighted in the screenshot below



When the status changed to “Detected HID Mode Device”, the MSR is properly connected.



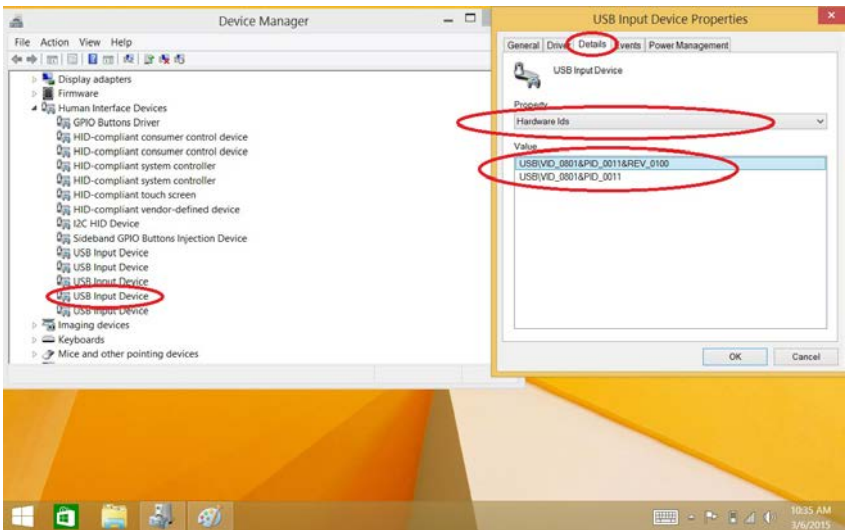
If the MSR cannot be detected, click “Rescan” on the menu bar to detect the MSR again.



If the MSR still can't be detected, relaunch the software and try again.

6.4 Smart Card Reader (SCR)

Once Smart Card Reader Module (SCR) is installed, which will be recognized automatically on Device Manager. Then, the module is working good to read smart card content.



6.5 Barcode Scanner

As the name implies, the barcode scanner grants users of the RTC the ability to scan barcodes for a wide variety of purposes. Please note that the scanner does not ship with any software or SDKs.

You can perform the following test to check if the scanner is working:

1. Open notepad
2. Scan any barcodes
3. If the scanner is working, the code will be scanned and reflected on the notepad.

For detailed specifications and operating instructions, please refer to the bar code scanner manual in the driver disk provided.

Appendix

A

Statements

A.1 Statements

Declarations and Safety Statements

Federal Communications Commission Statement

This device complies with part 15 of the FCC Rules. Operation is subject to the following conditions: (1) This device may not cause harmful interference (2) This device must accept any interference received, including interference that may cause undesired operation.

This device has been tested and found to comply with the limits for a Class B digital device, pursuant to Part 15 of the FCC Rules.

These limits are designed to provide reasonable protection against harmful interference in a residential installation. This equipment generates, uses and can radiate radio frequency energy and, if not installed and used in accordance with the instructions, may cause harmful interference to radio communications. However, there is no guarantee that interference will not occur in a particular installation. If this equipment causes harmful interference to radio or television reception, which can be determined by turning the equipment off and on, the user is encouraged to try to correct the interference by one or more of the following measures:

- Reorient or relocate the receiving antenna.
- Increase the separation between equipment and receiver.
- Connect the equipment into an outlet on a circuit different from that to which the receiver is connected.
- Consult the dealer or an experienced radio/TV technician for help.
- Changes or modifications not expressly approved by the party responsible for compliance could void the user's authority to operate the equipment.

The antenna(s) used for this transmitter must not be co-located or operating in conjunction with any other antenna or transmitter.

RF Exposure Information (SAR)

This device meets the government's requirements for exposure to radio waves. This device is designed and manufactured not to exceed the emission limits for exposure to radio frequency (RF) energy set by the Federal Communications Commission of the U.S. Government.

The exposure standard employs a unit of measurement known as the Specific Absorption Rate (SAR). The SAR limit set by the FCC is 1.6W/kg. Tests for SAR are conducted using standard operating positions accepted by the FCC with the EUT transmitting at the specified power level in different channels.

The highest SAR value for the device as reported to the FCC is 1.51 W/kg when placed next to the body.

The FCC has granted an Equipment Authorization for this device with all reported SAR levels evaluated as in compliance with the FCC RF exposure guidelines. SAR information on this device is on file with the FCC and can be found under the Display Grant section of www.fcc.gov/oet/ea/fccid on the FCC ID: OHBRTC700CWBGB. This device is in compliance with SAR for general population/uncontrolled exposure limits in ANSI/IEEE C95. 1-1999 and has been tested in accordance with the measurement methods and procedures specified in OET Bulletin 65 Supplement C.

A.2 Canadian Notice

IC Regulations

This device complies with Industry Canada license-exempt RSS standard(s). Operation is subject to the following two conditions: (1) this device may not cause interference, and (2) this device must accept any interference, including interference that may cause undesired operation of the device.

This Class B digital apparatus complies with Canadian ICES-003.

Cet appareil numérique de la classe B est conforme à la norme NMB-003 du Canada.

This Category II radio communication device complies with Industry Canada Standard RSS-310.

Ce dispositif de radio communication de catégorie II respecte la norme CNR-310 d'Industrie Canada.

IC Radiation Exposure Statement

This EUT is compliant with SAR for general population/uncontrolled exposure limits in IC RSS-102 and has been tested in accordance with the measurement methods and procedures specified in IEEE 1528. This equipment should be installed and operated with minimum distance 0 cm between the radiator and your body.

This device and its antenna(s) must not be co-located or operating in conjunction with any other antenna or transmitter.

The County Code Selection feature is disabled for produced mar-

keted in the U.S. and Canada.

For products available in the U.S./Canada markets, only channels 1-11 can be operated. The selection of other channels is not possible.

A.3 CE Mark Notice

CE Mark Warning



CE marking for devices without wireless LAN/Bluetooth®

The shipped version of this device complies with the requirements of the EEC directives 2004/108/EC “Electromagnetic compatibility” and 2006/95/EC “Low voltage directive.”



CE Marking for devices with wireless LAN/Bluetooth®

This equipment complies with the requirements of Directive 1999/5/EC of the European Parliament and Commission from March 9th, 1999 governing Radio and Telecommunications Equipment and mutual recognition of conformity.

A.4 Safety Caution/ Avertissement sur la sécurité

Important Safety Instructions

Power Safety Requirement

Products with electrical current ratings up to 2A and weighs more than 1 Kg must use approved power cords greater than or equal to: VCTF, 3G or 0.75mm².

Basic safety precautions should always be followed to reduce the risk of fire, electric shock and injury to persons, including the following:

Do not use this product near water, for example, near a bathtub, wash bowl, kitchen sink or laundry tub, in a wet basement or near a swimming pool.

Avoid using a telephone (other than a cordless type) during an electrical storm. There may be a remote risk of electric shock from lightning.

Do not use the telephone to report a gas leak in the vicinity of the leak.

Use only the power cord and batteries indicated in this manual. Do not dispose of batteries in a fire. They may explode. Check with local codes for possible special disposal instructions.

Instructions importantes de sécurité.

Exigences de sécurité concernant l'alimentation.

Les produits dont le courant électrique monte jusqu'à 2A et pesant plus

de 1Kgs doivent utiliser un cordon d'alimentation approuvé égal ou supérieur à VCTF, 3G ou 0.75mm²

Des mesures de précaution de base doivent toujours être suivies afin de réduire les risques d'incendie, de choc électrique et de blessures aux personnes, incluant :





- Ne pas utiliser ce produit près de l'eau, par exemple dans une baignoire, une cuvette, un évier, une machine à laver, un sous-sol humide ou une piscine.

- Éviter d'utiliser un téléphone (autre que sans fil) pendant un orage électrique ? il y a un risque de choc électrique à distance lié à la foudre.

- Ne pas utiliser le téléphone pour alerter lors d'une fuite de gaz si vous êtes dans le voisinage de la fuite

- Utiliser seulement le cordon d'alimentation et la batterie indiqués dans le manuel. Ne pas jeter les batteries dans le feu. Elles pourraient exploser. Vérifier les dispositions locales de recyclage.

A.5 Battery Disposal/ Recyclage de la batterie

	<p>There is a risk of explosion if the battery is replaced by an incorrect type. Dispose of used batteries according to the instructions.</p> <p><i>Il y a un risque d'explosion si la batterie est remplacée par un autre type incorrect.</i></p> <p><i>Disposer de la batterie en accord avec les instructions.</i></p>
	<p>This symbol indicates that the battery should NOT be placed in municipal waste.</p>
	<p>DO NOT throw the RTC-700C with municipal waste. This product is designed for proper reuse of parts and recycling. This symbol indicates that the products (electrical, electronic equipment and mercury-containing button cell battery) should not be placed in municipal waste. Check local regulations for disposal of electronic products.</p>
	<p>SAFE TEMP : The RTC-700C should only be used in environments between -20°C (-4°F) and 45°C (131°F).</p>

Regulatory information / Disclaimers

Installation and use of this Wireless LAN device must be in strict

accordance with the instructions included in the user documentation provided with the product. Any changes or modifications (including the antennas) made to this device that are not expressly approved by the manufacturer may void the user's authority to operate the equipment.

The manufacturer is not responsible for any radio or television interference caused by unauthorized modification of this device, or the substitution of the connecting cables and equipment other than manufacturer specified. It is the responsibility of the user to correct any interference caused by such unauthorized modification, substitution or attachment. Manufacturer and its authorized resellers or distributors will assume no liability for any damage or violation of government regulations arising from failing to comply with these guidelines.

A.6 Battery Caution

There is a danger of explosion if the battery is incorrectly replaced. Replace only with the same or equivalent type recommended by the manufacturer. Dispose of used batteries according to the manufacturer's instructions.

Il y a un risque d'explosion si la batterie est remplacée par un autre type incorrect.

Disposer de la batterie en accord avec les instructions.

Regulatory information / Disclaimers

Installation and use of this Wireless LAN device must be in strict accordance with the instructions included in the user documentation provided with the product. Any changes or modifications (including the antennas) made to this device that are not expressly approved by the manufacturer may void the user's authority to operate the equipment. The manufacturer is not responsible for any radio or television interference caused by unauthorized modification of this device, or the substitution of the connecting cables and equipment other than manufacturer specified. It is the responsibility of the user to correct any interference caused by such unauthorized modification, substitution or attachment. Manufacturer and its authorized resellers or distributors will assume no liability for any damage or violation of government regulations arising from failing to comply with these guidelines.

A.7 Adapter Caution /Avertissement sur l'adaptateur

This RTC is for use with model NO. LTE24E-S2-2C6.

Ce modèle RTC est à utiliser avec le modèle n° LTE24E-S2-2C6.

A.8 FCC Interference Statement

This equipment has been tested and found to comply with the limits for a Class B digital device, pursuant to Part 15 of the FCC Rules. These limits are designed to provide reasonable protection against harmful interference in a residential installation. This equipment generates, uses and can radiate radio frequency energy and, if not installed and used in accordance with the instructions, may cause harmful interference to radio communications. However, there is no guarantee that interference will not occur in a particular installation. If this equipment does cause harmful interference to radio or television reception, which can be determined by turning the equipment off and on, the user is encouraged to try to correct the interference by one or more of the following measures:

- Reorient or relocate the receiving antenna.
- Increase the separation between the equipment and receiver.
- Connect the equipment into an outlet on a circuit different from that to which the receiver is connected.
- Consult the dealer or an experienced radio/TV technician for help.

FCC Caution: Any changes or modifications not expressly approved by the party responsible for compliance could void the user's authority to operate this equipment.

This device complies with Part 15 of the FCC Rules. Operation is subject to the following two conditions: (1) This device may not cause harmful interference, and (2) this device must accept any interference received, including interference that may cause undesired operation.

This device and its antenna(s) must not be co-located or operating in conjunction with any other antenna or transmitter.

IMPORTANT NOTE:**Federal Communication Commission (FCC) Radiation Exposure Statement**

This EUT is compliance with SAR for general population/uncontrolled exposure limits in ANSI/IEEE C95.1-1999 and had been tested in accordance with the measurement methods and procedures specified in OET Bulletin 65 Supplement C.